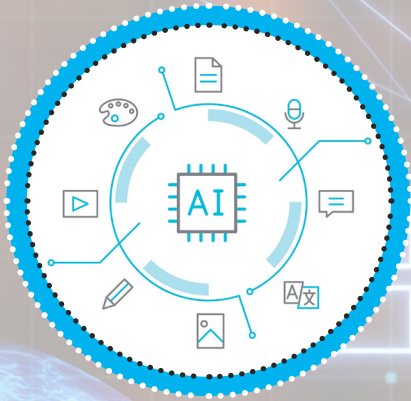


All About Artificial Intelligence (AI)



Artificial intelligence (AI) technology, such as streaming TV services and car navigation systems, is used by people across the world every day.

What Is AI?

AI is a computer, robot or machine's ability to learn. AI uses the information and instructions it is given to solve problems and make predictions.

The History of AI

- In 1948, British mathematician Alan Turing wrote about his idea of an intelligent machine that could learn.
- In 1951, Christopher Strachey was able to write one of the first AI programs.
- In 1956, Allen Newell, John Clifford Shaw and Herbert Simon wrote Logic Theorist, viewed by many as the first computer program to use human-like intelligence.
- In 1997, an AI computer named Deep Blue won a chess game against the reigning world chess champion, Gary Kasparov.
- In 2016, Hanson Robotics built Sophia, an advanced humanoid robot.

AI Today

Today, many smartphones use AI for face ID security and most modern cars have navigation systems that use AI technology. Streaming TV services, such as Netflix, also use AI to recommend shows to users based on what other viewers are watching. Virtual assistants, such as Alexa, use AI to answer questions and complete tasks. In addition, search engines use AI to search for information quickly.



Did You Know...?

Banking, shopping and utility companies, such as water and natural gas, use AI to help their customers through computers that answer phone calls and chat box questions.

Advantages and Disadvantages of AI

AI technology can work non-stop, solve problems at lightning speed and is less likely to make mistakes. AI robots can complete jobs that would possibly be too dangerous for humans, such as ocean or space exploration.

However, AI technology can break and malfunction. It is expensive to develop and fix. Additionally, AI only knows what it has previously been shown. Although AI has human-like intelligence, it cannot copy or understand human emotion.



How Is AI Evolving?

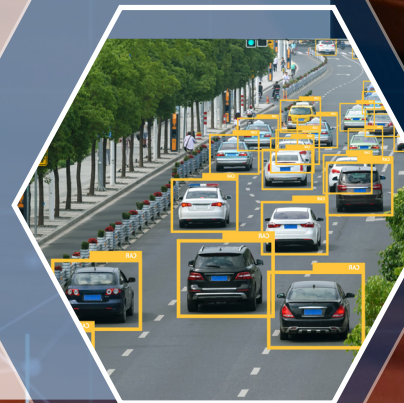
Most current AI is referred to as **narrow or weak AI**. In the future, advancements in **strong AI** will strive to make technology that can do things like design video games, write music or poetry with little human help.

AI is a fast-developing technology. It is appearing more frequently in our everyday lives, so it is important to keep ourselves safe when we use it.

Glossary

narrow or weak AI: Machines or robots that can only perform the task they are programmed to do.

strong AI: Machines or robots that can understand and learn advanced tasks.



1. Who was a British mathematician? Tick one.

- ☐ Christopher Strachey
- ☐ Gary Kasparov
- ☐ Alan Turing
- ☐ Alan Newell

2. What sort of AI technology do most modern cars have? Tick one.

- ☐ power steering
- ☐ navigation systems
- ☐ four-wheel drive
- ☐ automatic windscreen wipers

3. What utility companies are mentioned in the text? Tick one.

- ☐ electricity and water
- ☐ natural gas and electricity
- ☐ broadband and water
- ☐ water and natural gas

4. According to the text, what might AI be able to do in the future? Tick one

- ☐ teach classes
- ☐ write poetry
- ☐ cook dinner
- ☐ run a country

5. Look at the section called **Advantages and Disadvantages of AI**.

Find and copy one word that means the same as 'go wrong'.

6. Fill in the missing words.

Streaming TV services, such as Netflix, also use AI to _____ shows to users based on what other _____ are watching.

7. What surprised you the most about AI? Explain your answer.

8. Can you think of another job that can be done by AI technology? Explain your answer.
