



# First Aid Policy

**Tankersley St Peters  
Primary School**

**For September 2024**

*Issued by: Health, Safety and Emergency  
Resilience Service  
(01226) 772274*

*September 2022*

## **CONTENTS**

	<b>Page</b>
<b>Section 1      General Policy Statement</b>	<b>3</b>
<b>Section 2      Statement of First Aid Organisation</b>	<b>4</b>
<b>Section 3      Arrangements for First Aid</b>	<b>6</b>
<b>3.1      Materials, equipment and facilities</b>	<b>6</b>
<b>3.2      Appointment of first aid personnel</b>	<b>7</b>
<b>3.3      Information on first aid arrangements</b>	<b>10</b>
<b>3.4      Assessment of first aid requirements</b>	<b>10</b>
<b>3.5      Payment for First Aiders</b>	<b>10</b>
<b>3.6      Record Keeping</b>	<b>11</b>
<b>Section 4      Accident Reporting</b>	<b>11</b>
<b>Section 5      Pupil Accidents Involving Head Trauma</b>	<b>11</b>
<b>Section 6      Transport to Hospital or Home</b>	<b>12</b>
<b>Section 7      Associated Advice</b>	<b>12</b>
<b>Section 8      Provision Away from the School</b>	<b>15</b>
<b>Section 9      Approval</b>	<b>17</b>
<b>Appendix 1    School First Aid Risk Assessment</b>	<b>18</b>

## **SECTION 1      General Policy Statement**

The Governors and Headteacher of Tankersley St Peters Primary School accept their responsibility under the Health and Safety (First Aid) Regulations 1981 (as amended) and acknowledge the importance of providing first aid for employees, children and visitors within the School.

The Governors are committed to the Authority's procedure for reporting accidents and recognise their statutory duty to comply with the Reporting of Injuries, Diseases and Dangerous Occurrences Regulations 2013.

The provision of first aid in the school will be in accordance with the Schools Health and Safety Standard for Accidents and Incidents (Adverse Events).

The aim of first aid is to reduce the effects of injury or illness occurring at work. Sufficient first aid personnel and facilities will be available to:

- (i) give immediate assistance to casualties with both common injuries or illness which are likely to arise from specific hazards at work;
- (ii) summon an ambulance or other professional help.

The minimum first aid provision in this school will be:

- (i) a suitability stocked first aid container;
- (ii) an appointed person to take charge of first aid arrangements;
- (iii) information for employees on first aid arrangements;
- (iv) a procedure for managing accidents.

Additional first aid provision will be determined using the first aid risk assessment attached to this document.

This policy will be reviewed annually and the Corporate Health, Safety and Emergency Resilience Service will be contacted for advice on recommendations for improvement.

Signed: \_\_\_\_\_  
(Chairperson of the Governing Body)

Date: \_\_\_\_\_

Signed: \_\_\_\_\_  
Headteacher

Date: \_\_\_\_\_

## **SECTION 2 Statement of First Aid Organisation**

The School's arrangements for carrying out the policy extends to the governing body, the employer and the employees and are detailed below:

### **(a) The Employer**

Health and safety legislation places duties on employers for the health and safety of their employees and anyone else on their premises. In schools this includes responsibility for the Headteacher and teachers, non-teaching staff, pupils and visitors (including contractors). Who the employer is depends on the type of school;

- community and voluntary controlled schools and special schools it is the local education authority;
- voluntary aided schools it is the governing body of the school.

The employer is responsible, under the Health and Safety at Work Act 1974 (HSWA), for making sure that a school has a health and safety policy. This should include arrangements for first aid, based on a risk assessment of the school, and should cover:

- number of First Aiders/Emergency First Aiders/Appointed persons;
- numbers and locations of first aid containers;
- arrangements for off-site activities/trips;
- out of school hours arrangements e.g. school sports matches, parents evening.

Additionally the employer should ensure that:

- (i) a risk/needs assessment of the first aid requirements of the school is undertaken and the finding acted upon.
- (ii) the school premises and vehicles are equipped with apparatus and materials to carry out first aid treatment.
- (iii) arrangements are made to provide appropriate training, including any additional special training, to employees, records are maintained of that training and reviewed annually.
- (iv) a procedure for managing accidents in school which require first aid treatment is established.
- (v) employees are provided with information regarding the arrangements for first aid.
- (vi) all occasions when first aid is administered to employees, pupils and visitors are recorded.
- (vii) all accidents are reported, recorded and are investigated appropriately

If the school leases/rents out the hall or other parts of the premises to third parties out of hours, the letting agreement should state whether or not any first aid provision will be made.

**(b) The Governing Body**

The governing body of a school are required to:

- (i) have a First Aid Policy;
- (ii) review the policy annually;
- (iii) ensure that the Headteacher has the resources to implement the policy;
- (iv) monitor the implementation of the policy.

Additionally, the Governing Body accept their responsibilities towards non-employees. In order to provide first aid for pupils and visitors, the Governing Body will undertake a needs assessment to determine, in addition to the Appointed Person, how many persons with a First Aid at Work/Emergency First Aid at Work certificate of competence are required.

**(c) Employees**

All employees are required to:

- (i) Comply with their employers arrangements for first aid
- (ii) Report any adverse events which could give rise to or have resulted in an accident

Teachers' conditions of employment do not include giving first aid, although any member of staff may volunteer to undertake these tasks. Teachers and other staff in charge of pupils are expected to use their best endeavours at all times, particularly in emergencies, to secure the welfare of the pupils at the school in the same way that parents might be expected to act towards their children. In general, the consequences of taking no action are likely to be more serious than those of trying to assist in an emergency.

## **SECTION 3 Arrangements for First Aid**

### **3.1 Materials, equipment and facilities**

The School will, as a minimum, provide materials, equipment and facilities as set out below. This may need to be supplemented with additional materials or equipment dependant on the findings of the needs assessment.

#### **(a) First Aid Containers**

Every school must provide at least one full stocked first aid container for each site. Additional first aid containers will be needed for split-sites/levels, remote sports fields or playgrounds, any other high-risk areas and any off-site activities. As a minimum First Aid containers will contain the following items:

<b>ITEM</b>	<b>FIRST AID BOXES</b>	<b>TRAVELLING FIRST AID KITS</b>
Guidance leaflet on giving general guidance on first aid	1	1
Individually wrapped sterile plasters (assorted sizes), appropriate to the type of work (hypoallergenic plasters can be provided if necessary)	20	6
Sterile eye pads	2	
Individually wrapped triangular bandages, preferably sterile	2	2
Safety pins	6	2
Medium sized individually wrapped sterile un-medicated wound dressings (approx. 12cm x 12cm)	6	
Large sterile individually wrapped un-medicated wound dressings (approx 18cm x 18cm)	2	1
Individually wrapped sterile wet wipes		Small packet
Disposable gloves for wear by any personnel handling blood, vomit, excreta, etc.	Min 3 pairs	2 pairs

This first aid container shall be:

- maintained in a good condition free from damp and dust;
- suitable for the purpose of keeping the items referred to above in good condition;
- readily available for use; and
- prominently marked as a first aid container - white cross on a green background

In addition to the items set out for the first aid box in school the following items will be provided:

- (i) Disposable drying materials.
- (ii) Plastic bowls – one for cleaning wounds and one for cleaning vomit, excreta, etc.
- (iii) Disinfectant/household bleach or similarly effective solution – one part to ten parts water for cleaning sinks and bowls and soiled surfaces.

- (iv) Yellow biohazard bags for disposing of clinical waste (see section 7b).
- (v) A small supply of paracetamol is recommended for dysmenorrhoea (period pains). These must be securely kept separate to the first aid box and issued to pupils as appropriate and necessary by a person designated by the Headteacher. Records must be kept of all paracetamol issued (how many tablets, to whom, when and why).

***Items in (iii), (iv) and (v) above will be secured from access by children.***

For guidance on the first aid requirements for mini-buses, see the separate minibus guidance document.

The availability and contents of the first aid box(es) and other medical supplies will be checked on a regular basis by a designated First Aider/Appointed Person. They will also be responsible for all record keeping including:

- keeping first aid signage up to date,
- maintaining an inventory of the location of first aid boxes/supplies,
- recording when first aid boxes were checked for sufficient and in-date supplies,
- ensuring that first aiders are still qualified to carry out their duties and certificates are in-date.

## **(b) Medical Room**

In compliance with The Education (School Premises) Regulations in force at the time the Governing Body will ensure that a room will be made available for medical treatment. This facility will contain the following and be readily available for use:

- sink with running hot and cold water;
- drinking water (if not available on mains tap) and disposable cups;
- paper towels;
- smooth-topped working surfaces;
- a range of first aid equipment (at least to the standard required in first aid boxes) and proper storage;
- chair;
- a couch or bed (with waterproof cover protection), clean pillows and blankets;
- soap;
- clean protective garments for first aiders;
- an appropriate record-keeping facility;

The appointed room is the Staff Room.

## **3.2 Appointment of First Aid Personnel**

The appointment of first aiders within the School will be calculated in accordance with the first aid risk assessment provided at appendix 1.

Unless first aid cover is part of a staff member's contract of employment, those who agree to become First Aiders do so on a voluntary basis.

In determining who should be trained in first aid the Headteacher will consider each individual against the following criteria:

- reliability and communication skills;
- aptitude and ability to absorb new knowledge and learn new skills;
- ability to cope with stressful and physically demanding emergency procedures;
- ability to leave normal duties to go immediately to an emergency.

**(a) Appointed Persons**

The Headteacher will appoint a member of staff to be the Appointed Person. The duties of the Appointed Person are to:

- look after the first aid equipment e.g. restocking the first aid container;
- ensure that an ambulance or other professional medical help is summoned when appropriate.

Appointed persons are not First Aiders. They should **not give** first aid treatment. However it is good practice to ensure that appointed persons have emergency first aid training (EFAW) and refresher training as appropriate.

**(b) First Aid at Work Certificate (FAW)**

This qualification is obtained through an approved course which reflects the standards set by Health and Safety Executive (HSE). FAW training courses involve at least 18 hours of training and are run over a minimum of three days and involve the attendee successfully completing an assessment. Holders of this qualification are normally referred to as First Aiders. At school the main duties of a First Aider are to:

- give immediate help to casualties with common injuries or illness and those arising from specific hazards at school;
- ensure that an ambulance or other professional medical help is called if it is deemed necessary.

The role of the qualified First Aider includes the treatment of any person on the school site/premises whether or not they are an employee, pupil, contractor or member of the public.

Additional training as identified by the needs assessment e.g. paediatric first aid, administration of epi-pens, may be required

**(c) Emergency First Aid at Work (EFAW)**

Emergency First Aid at Work is a one day course which provides basic life saving first aid and guidance on workplace health and safety regulations obtained through an approved course which reflects the standards set by Health and Safety Executive (HSE). The course is ideal for smaller workplaces which present few health and safety risks.

**NOTE**

***i) Other appropriate training identified should have a duration that relates to the relevant syllabus content (as compared with FAW/ EFAW)***



**(d) Paediatric First Aid**

In addition to the first aid personnel requirements identified above, services and organisations which care for 0 to 5 year olds must have at least one first aider on the premises who has completed a specific course in paediatric first aid. To ensure there is adequate cover for absences and off site visits it is recommended that this cover is increased to at least two qualified people.

Persons who are in receipt of the First Aid at Work qualification may also attend paediatric first aid training and thereby hold both qualifications. However, it is not a requirement for a person attending the Paediatric First Aid Course to already hold the First Aid at Work qualification.

**(e) Matrons and School Nurses**

For a person to be designated the appointment of matron or school nurse, that person must either be an:

- Enrolled Nurse or
- Registered Nurse

The regulations relating to First Aid at Work Certificates applies, in that those employees need to undertake refresher training in order for their qualification in First Aid at Work to be valid.

Where a nurse is based at the Special School, but not employed by the Education Authority, it is the responsibility of that nurse to consult their employer regarding the validity of their qualification for administering first aid under the Regulations.

**(f) Rescue and Emergency Care**

There are other HSE recognised first aid qualifications which are specialised for particular circumstances. Many of these are designed for use where access to medical emergency services are limited and where the welfare of the injured may depend on immediate treatment.

These are particularly useful for off-site visits and most outdoor activity qualifications are only valid with up to date specific first aid qualifications.

They are normally gained through intensive 2 or 3 day practical courses and are renewable every 3 years.

Information on these courses can be obtained through the Outdoor Activity Specialist.

**(g) General Points**

- (i)** Certificates for the purposes of first aid at work last for three years. Before their certificates expire, first-aiders will need to undertake a requalification course as appropriate, to obtain another three-year certificate. Once certificates have expired the first aider is no longer considered to be competent to act as a workplace first aider.

- (ii) Records of First Aiders certification dates and dates of additional specific or refresher training should be kept in a file within the school.

### **3.3 Information on First Aid arrangements**

The Headteacher will inform all employees at the School of the following:

- the arrangements for recording and reporting accidents;
- the arrangements for first aid;
- those employees with qualifications in first aid;
- the location of first aid boxes.

In addition the Headteacher will ensure that signs are displayed throughout the School providing the following information:

- names of employees with first aid qualifications
- location of first aid boxes.

All members of staff will be made aware of the School's First Aid Policy.

### **3.4 Assessment of First Aid Requirements**

The minimum number or basic level of first aid provision is calculated using a risk assessment (see appendix 1), taking into account factors such as:

- staff and/or pupils with disabilities or special health needs;
- age range of the pupils;
- activities undertaken during school session times;
- materials and equipment to which children have access;
- number of pupils on site;
- the number of buildings on the school site.

However, schools must give additional consideration to the following factors when determining the level of provision:

- the arrangements when a qualified first aider is not on site due to absence/training;
- the design/layout of the site/premises is such that staff who are trained in emergency first aid should be readily available.
- first aid requirements for school visits and journeys, break and lunchtimes

Therefore, there will often be more first aiders than are required by the risk assessment.

### **3.5 Payment for First Aiders**

In order to receive payment for first aid duties you need to:

1. Hold a current/valid First Aid at Work certificate, and;
2. Be one of the designated First Aiders/Appointed Persons detailed on the first aid risk assessment for your premises, and;
3. Be designated as a First Aider/Appointed Person on SAP/ your payroll providers payment system (subjects to points 1 and 2, your manager will need to submit a variation to contract to BSS to achieve this)

### **3.6 Record Keeping**

Schools are to keep a record of all First Aid training.

## **SECTION 4 Accident Reporting**

The Governing Body will implement the Council's Procedures for reporting:

- (a) all accidents to employees;
- (b) all incidents of violence and aggression.

The Governing Body is aware of its statutory duty under The Reporting of Injuries, Diseases and Dangerous Occurrences Regulations 1995 (RIDDOR) as amended in respect of reporting the following to the Health and Safety Executive as it applies to employees.

Detailed guidance on the reporting of accidents can be found in the Accidents and Incidents Management Standard.

## **SECTION 5 Pupil accidents involving Head Trauma**

The Governing Body recognise that accidents involving the pupil's head can be problematic because the injury may not be evident (e.g. internal) and the effects only become noticeable after a period of time.

- (a) In accordance with the Health and Safety Management Standard for Accidents and Incidents (Adverse Events), where a pupil receives a blow to the head as a result of an accident Form RH1 – bump note will be completed.
- (b) Where emergency treatment is not required the Form RH1 – Bump Note , found in the Schools Management Standard for Accidents and Incidents (Adverse Events) will be sent to the parents as the reverse side of the letter informing them of the accident to their child.
- (c) For a bump to the head, a text message will be sent home advising the parent that their child has had a bump to the head and a bump note will be being sent home with them.

## **SECTION 6 Transport to Hospital or Home**

- The Headteacher will determine what is a reasonable and sensible action to take in the circumstances of each case.
- (a) Where the injury is an emergency an ambulance will be called following which the parent will be called.
  - (b) Where hospital treatment is required but it is not an emergency, then the Headteacher will contact the parents for them to take over the responsibility of the child.
  - (c) If the parents cannot be contacted then the Headteacher may decide to transport the pupil to hospital.
  - (d) Where the Headteacher makes arrangements for transporting a child then the following points will be observed:
    - i) only staff cars insured to cover such transportation will be used;
    - ii) no individual member of staff should be alone with a pupil in a vehicle;
    - iii) the second member of staff will be present to provide supervision for the injured pupil;
    - iv) at least one member of staff will be the same gender as the pupil.
    - v) where reasonably practicable, efforts are made to obtain the appropriate car seat for the pupils height/weight<sup>1</sup>

---

<sup>1</sup> The law allows for children between three and 12 years to travel in the **back** of a car using no more than an adult seat belt for short and occasional journeys made for reasons of "unexpected necessity" (so in unforeseen circumstances such as an accident, a child seat would not be required if there were none available for use.)

## **SECTION 7 Associated Advice**

### **(a) Emergency Dental Care**

The Community Dental Services offer the following guidance on procedures to be followed when a child has a tooth displaced during an accident at school. The advice, if followed, may well prevent the disfigurement of a child by the loss of a front tooth.

#### **Emergency First Aid following trauma to the teeth**

Dentists advise that following trauma to the mouth it is important that the child is assessed by a dentist as soon as possible, even if there is no apparent damage to the teeth.

This treatment may be provided by the child's dentist, by the Community Dentist at the nearest Community Dental Clinic, or by any other dentist who can be contacted and is willing to provide immediate treatment.

It is not advisable to attend hospital for the urgent dental treatment required as valuable time may be lost during travelling or waiting while more serious accident cases are treated.

### **(b) Blood Spillages and bodily fluids (including vomit)**

A COSHH assessment should be obtained and displayed with the supplies for dealing with body fluids and clinical waste. The procedure for dealing with bodily fluids is:

- put on plastic apron and latex gloves;
- place paper towels over spillage;
- gently pour disinfectant on to the paper towels;
- for carpets use soap and hot water as some disinfectants will bleach;
- wash gloved hands and leave the solution as directed on the label;
- pick up towels (with gloves) and place in a plastic bag;
- wash the area thoroughly with detergent and hot water, then dry;
- place all used towels in a plastic bag, wash gloved hands, place gloves in bag and seal, and ensure bag is sent for incineration;
- wash hands.

### **(c) Clinical Waste and Contaminated Injuries**

Clinical waste is disposed of in yellow bags as this colour identifies the contents as bodily fluids or waste. The schools' clinical waste and hygiene services which collect sanitary waste can be asked to provide larger bins for nappies and body fluids. This also includes incontinence in nursery/primary pupils.

If it is thought that biological pathogens have entered the body via a contaminated injury, the Corporate Health and Safety Management Standard for Contaminated Injuries should be referred to for further guidance.

Contaminated injuries include:

- Human bites
- Scratches by humans
- Injuries caused by an object contaminated with visible blood
- Needle stick injury/injury with a needle
- Exposure to blood borne viruses (e.g. hepatitis B, hepatitis C, Human Immunodeficiency Virus (HIV))

**(d) School Journeys**

- The provision of adequate first aid cover should form part of the essential risk assessment involved in organising any off-site activity.
- Where the trip is extended or remote in nature, or the likelihood of injury is higher, a qualified First Aider should accompany the group.
- Where journeys are close to populated areas, or the likelihood of injury is minimal, then an appointed person or someone with a working knowledge of first aid procedures should accompany sports or field trips and other school journeys, and a travelling first aid kit should be provided.
- The planning for such journeys will include what to do in case of accident and emergency (see Educational Visits and Journeys Guidance).

**(e) Access for Ambulance**

Unobstructed and adequate access should be maintained for ambulances and for ambulance staff and their equipment. Suitable signs should be displayed if deemed appropriate.

**(f) Hospital Consent Forms**

It is unlikely that school staff who take pupils to hospital after accidents will be asked by the hospital to sign consent forms but if asked they must decline.

The hospital will have procedures for obtaining consent from other sources if the parents are not available.

**(g) Religious Considerations**

Due to religious convictions, some families choose to decline certain medical procedures or treatments. If this is made known to the school, pupils' record cards should have an appropriate entry regarding this, and this should be known to the First Aider or teacher who may have the duty of taking the child to hospital in emergency if the parent is not available.

**(h) Other Users of the Premises**

Headteachers should encourage mutual co-operation and assistance between the other users of the premises (for example DSO Catering, Caretaking and Cleaning Services) and the school in first aid matters.

Contractors may have their own First Aiders or Appointed Persons. The school and the contractors should co-operate and exchange information about First Aiders, etc. in case there is a need for help and assistance in an emergency.

Similarly, Headteachers should inform those hiring the premises where the First Aid facilities are.

**(i) Children with Medical Conditions**

There are children in mainstream schools and special schools who may have particular medical conditions where the administering of first aid may require variation. Such children should be subject to an individual care plan and may require special procedures in the event of an accident.

The school should have a separate Policy for 'Supporting Children in School who have a Medical Need'. This will deal with specific response to emergencies such as anaphylaxis and asthma attack.

**(j) Contaminated Injuries**

Additional, specific advice on dealing with contaminated injuries is available in the Contaminated Injuries Health and Safety Management Standard available on the health and safety website.



## **Section 8 – Provision away from the school**

- (a) Provision of first aid away from the school site is part of the arrangements under visits and journeys. The level of first aid provision is an integral part of the risk assessment process.
- (b) The provision of first aid will reflect whether the visit or journey is deemed to be low, medium or high risk.
- (c) Factors which will determine the level of risk will include:
  - (i) means of transport;
  - (ii) whether the visit is to a remote location or an establishment with first aid provision;
  - (iii) nature of any activities the pupils might be involved in;
  - (iv) estimated time for emergency services to arrive.
- (d) A risk assessment is by its very nature, a response to a number of variables, and as such it is impossible to provide a table that details the level of first aid provision to a specific visit or journey. Some examples are:

**(i) Low risk – walking a class from school to a nearby municipal building.**

In such a case carrying first aid provisions would not appear to be necessary. The important factor would be the need to summon assistance in the event of any accident (e.g. road traffic collision). A mobile phone would be an appropriate risk management control.

**(ii) Medium Risk – sports activity after school**

In this case the risk of personal injury is increased and therefore it would be expected that first aid provisions would be available and the member of staff would have a knowledge of first aid, such as the Emergency First Aider at Work certificate.

**(iii) High Risk – an adventurous activity where the group leader is a member of the school staff**

In order to undertake this activity the group leader would normally hold a nationally recognised qualification, which requires the possession of a first aid qualification enabling them to administer first aid.

They should carry an appropriate first aid kit throughout the activity.

The vehicle on which the group travel should carry the appropriate first aid provisions as detailed in the Minibus Guidance

- (e) The attainment of the Rescue and Emergency Care first aid qualification may be appropriate for staff who organise or accompany educational visits on a regular basis.
- (f) In any case where a school is uncertain of the level of first aid provision they should contact the Authority's Visits and Journeys Coordinator.

## **SECTION 9 Approval**

This Policy was approved by the Governing Body of the School at their meeting on

\_\_\_\_\_ and recorded by resolution in the  
minutes of meeting.

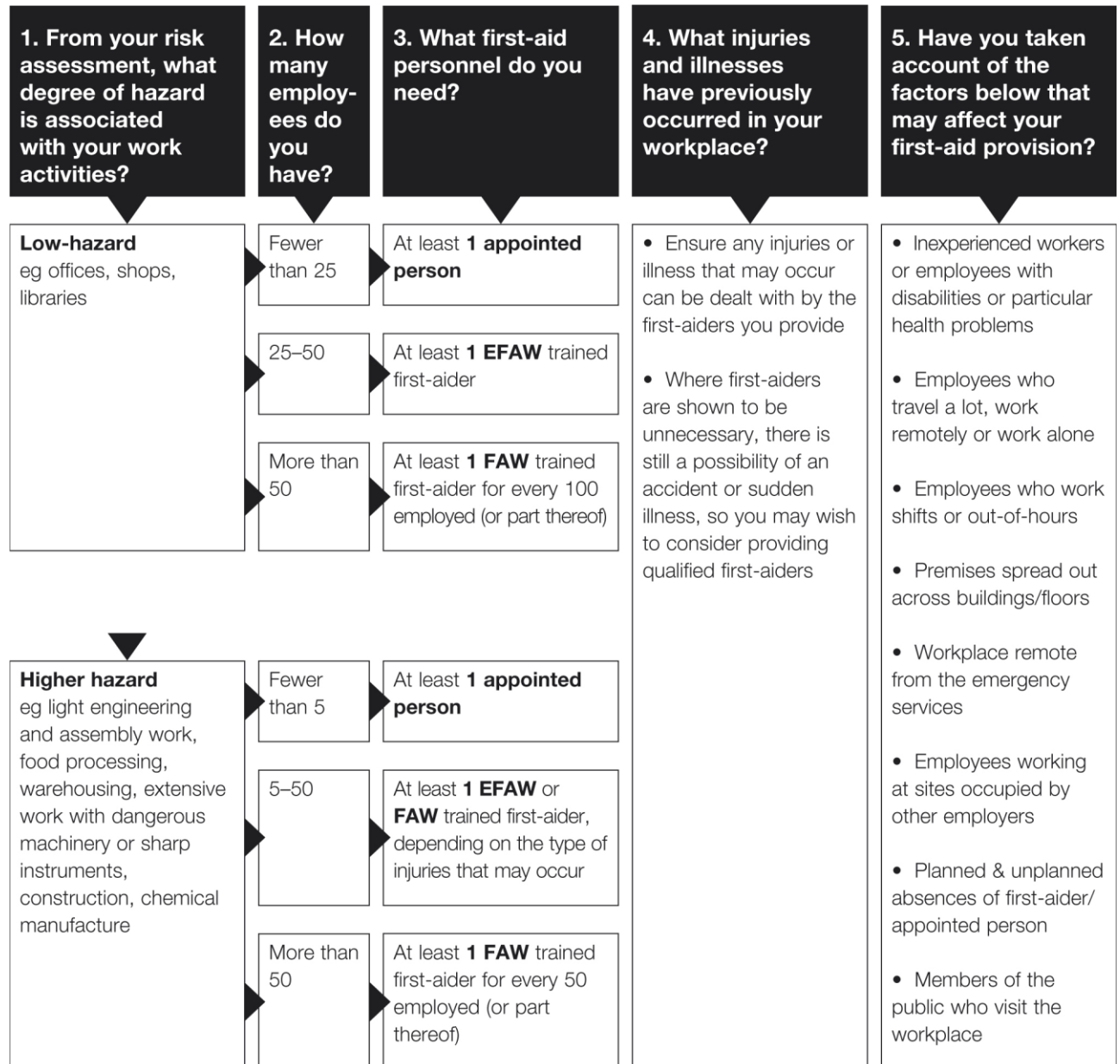
Date of policy review **To be reviewed annually**

**Barnsley Metropolitan Borough Council  
Health, Safety and Emergency Resilience Service  
First Aid Needs Assessment Form**

<b>School Name</b>	Tankersley St Peters Primary School
<b>Address</b>	Westwood New Road, Tankersley, Barnsley S75 3DA
<b>Date of Assessment</b>	08.05.24
<b>Name of Assessor</b>	S Snowball
<b>Signature of Assessor</b>	S.Snowball
<b>Headteacher/Governor/Responsible Person</b>	Vicky Harrison
<b>Signature</b>	V Harrison
<b>Date</b>	08.05.24

This table, extracted from HSE guidance, is to assist managers/supervisors in determining the number of first aiders/emergency first aiders required by the Health and Safety (First Aid) Regulations 1981(as amended) . Regardless of the numbers of First Aiders/Emergency First Aiders required the following must be considered:

1. When considering the risk level of the workplace/environment e.g. a normal classroom would be considered a low hazard environment while a laboratory or workshop would be high hazard.
2. Where there are hazards for which additional first aid skills are necessary at least one First Aider trained in the specific emergency action is required (examples include the use of/contact with cyanide and hydrofluoric acid).
3. Where employees travel a lot, work remotely or work alone personal first aid kits should be provided.
4. There needs to be adequate first aid provision at all times people are at work, including considering shift and out-of-hours work.
5. The provision of first aid to Council employees who work at sites occupied by other employers.
6. There needs to be adequate first aid provision to cover annual leave and planned absences (also consider what action will be taken in unplanned and emergency absences).
7. The number and type of members of the public who visit the premises.
8. Whether the calculated first aid provision seems reasonable considering the type of injuries that might occur.



**Barnsley Metropolitan Borough Council  
Health, Safety and Emergency Resilience Service  
First Aid Risk Assessment Form**

<b>Directorate</b>	
<b>Division</b>	Tankersley St Peters Primary School
<b>Service/Function</b>	Education
<b>Location/site</b>	Westwood New Road, Tankersley, Barnsley, S75 3DA
<b>Date of Assessment</b>	08.05.24
<b>Senior Designated Officer for the site</b>	V Harrison
<b>Name of assessor</b>	W Howe
<b>Date</b>	08.05.24

This form is to assist managers/supervisors in determining the number of first aiders/emergency first aiders required by the Health and Safety (First Aid) Regulations 1981 and the Approved Code of Practice. The form allocates weightings to possible replies to the questions. These weightings are shown in brackets.

- Complete Parts 1-13 of the Assessment by writing the weighting for the reply in the appropriate box. Unless otherwise stated, choose only one reply for each question.
- Calculate the overall total for Parts 1-13 using the space provided on page 6 of the form. Once you have calculated your overall total refer to the table on page 7 to determine your first aid requirement.

**PART 1**

- What types of injury and ill health have been recorded in the past? (Choose one reply only)
- |   |                                     |     |
|---|-------------------------------------|-----|
| a) Minor cuts and bruises; eye irritation.                                  | <input type="checkbox"/>            | (1) |
| b) Lacerations; burns; concussion; serious sprains; minor fractures.        | <input checked="" type="checkbox"/> | (2) |
| c) Amputations; poisonings; major fractures; multiple injuries; fatalities. | <input type="checkbox"/>            | (3) |

**PART 2**

- What are the risks of injury arising from the work? (Choose one reply only)
- |                |                                     |     |
|----------------|-------------------------------------|-----|
| a) Low risk    | <input checked="" type="checkbox"/> | (1) |
| b) Medium risk | <input type="checkbox"/>            | (2) |
| c) High risk   | <input type="checkbox"/>            | (3) |

**PART 3**

- Does your workplace contain any of the specific hazards listed below? (Choose appropriate reply/replies)
- |  |                                     |     |
|--|-------------------------------------|-----|
| a) Hazardous substances/chemicals                    | <input checked="" type="checkbox"/> | (3) |
| b) Dangerous tools/equipment/machinery/loads/animals | <input type="checkbox"/>            | (3) |

- c) Work at height  (3)  
d) Workplace transport  (3)

Total for Part 3

#### **PART 4**

Are there parts of your establishment where different levels of risk can be identified (such as a range of offices and workshops). (Choose one reply only)

- a) Yes  (2)  
b) No  (1)

#### **PART 5**

What is the nature of the location to which this assessment applies? (Choose one reply only)

- a) Offices, libraries etc  (1)  
b) Light engineering, warehousing etc  (2)  
c) Construction, work with dangerous machinery, sharp instruments, etc.  (3)

Are there hazards for which additional first aid skills are necessary (examples include the use of/contact with cyanide and hydrofluoric acid)? (Choose one reply only)

- a) Yes  (2)  
b) No  (1)

#### **PART 6**

Are there young/inexperienced workers on site or employees with disabilities or particular health problems? (Choose one reply only)

- a) Yes  (2)  
b) No  (1)

#### **PART 7**

Are there several buildings on site or multi-floor buildings? (Choose one reply only)

- a) Yes  (2)  
b) No  (1)

#### **PART 8**

Is there shift work or out-of-hours working? (Choose one reply only)

- a) Yes  (2)  
b) No  (1)

**PART 9**

Is the workplace remote from emergency medical services? (Choose one reply only)

a) Yes  (2)

b) No  (1)

**PART 10**

Do you have employees at work sites occupied by other employees? (Choose one reply only)

a) Yes  (2)

b) No  (1)

**PART 11**

Do you have any work experience trainees? (Choose one reply only)

a) Yes  (2)

b) No  (1)

**PART 12**

Do members of the public visit your premises? (Choose one reply only)

a) Yes  (2)

b) No  (1)

**PART 13**

Do you have employees with reading or language difficulties? (Choose one reply only)

a) Yes  (2)

b) No  (1)

Now that you have completed the risk assessment, enter the totals for **Each Part** in the boxes below and calculate the Overall Total.

PART 1	<input type="text" value="2"/>
PART 2	<input type="text" value="3"/>
PART 3	<input type="text" value="2"/>
PART 4	<input type="text" value="1"/>
PART 5	<input type="text" value="1"/>
PART 6	<input type="text" value="2"/>
PART 7	<input type="text" value="2"/>
PART 8	<input type="text" value="2"/>
PART 9	<input type="text" value="1"/>
PART 10	<input type="text" value="2"/>

PART 11	2
PART 12	2
PART 13	1
<b>OVERALL TOTAL</b>	<b>23</b>

**OVERALL TOTAL**

Having obtained the Overall Total, look for the corresponding Overall Total in the table below and, taking account of the number of people employed in the location, find out the First Aid requirement.

Regardless of the numbers of First Aiders/Emergency First Aiders required the following must be considered:

1. Where there are hazards for which additional first aid skills are necessary at least one First Aider trained in the specific emergency action is required (examples include the use of/contact with cyanide and hydrofluoric acid).
2. Where employees travel a lot, work remotely or work alone personal first aid kits should be provided.
3. There needs to be adequate first aid provision at all times people are at work, including considering shift and out-of-hours work.
4. The provision of first aid to Council employees who work at sites occupied by other employers.
5. There needs to be adequate first aid provision to cover annual leave and planned absences (also consider what action will be taken in unplanned and emergency absences).
6. The number and type of members of the public who visit the premises.
7. Whether the calculated first aid provision seems reasonable considering the type of injuries that might occur.



<b>Overall Total</b>	<b>Numbers employed at any location</b>	<b>Suggested number of qualified First Aiders/Emergency First Aiders</b>
16-24	Fewer than 50	At least one Emergency First Aider (Emergency First Aid at Work trained and qualified)
	50-100	At least one First Aider (First Aid at Work trained and qualified)
	More than 100	One additional First Aider for every 100 employed (or part thereof) (First Aid at Work trained and qualified)
25-33	Fewer than 20	At least one Emergency First Aider (Emergency First Aid at Work trained and qualified)
	20-100	At least one First Aider for every 50 employed (or part thereof) (First Aid at Work trained and qualified)
	More than 100	One additional First Aider for every 100 employed (or part thereof) (First Aid at Work trained and qualified)
34-41	Fewer than 5	At least one Emergency First Aider (Emergency First Aid at Work trained and qualified)
	5-50	At least one First Aider (First Aid at Work trained and qualified)
	More than 50	One additional First Aider for every 50 employed (or part thereof) (Emergency First Aid at Work trained and qualified)