

Community: As members of a community, we will be learning about people who help look after us.

Self-Belief: As people aiming high with self-belief, we will be setting goals for ourselves.

Enterprise: As enterprising people, we will be using role-play to buy and sell goods in our optician's role-play area and in our French fruit shop work.

English RWI Phonics / Spelling

Diary writing: Florence Nightingale visit

Topic related: Florence Nightingale, facts & information.

If all the world were... - letter writing, poetry.

Funnybones - story writing

Maths

Measurement: Money

Number: Multiplication & Division

Daily COUNTDOWN and times tables.

Science

Animals including humans Identify, name, draw and label the basic parts of the human body and say which part of the body is associated with each sense. (YEAR 1 OBJECTIVE)

Notice that animals, including humans, have offspring which grow into adults.

Find out about and describe the basic needs of animals, including humans, for survival (water, food and air).

Describe the importance for humans of exercise, eating the right amounts of different types of food, and hygiene.

COOKING NUTRITION / SCIENCE - Make - A simple balanced meal on an eat well plate

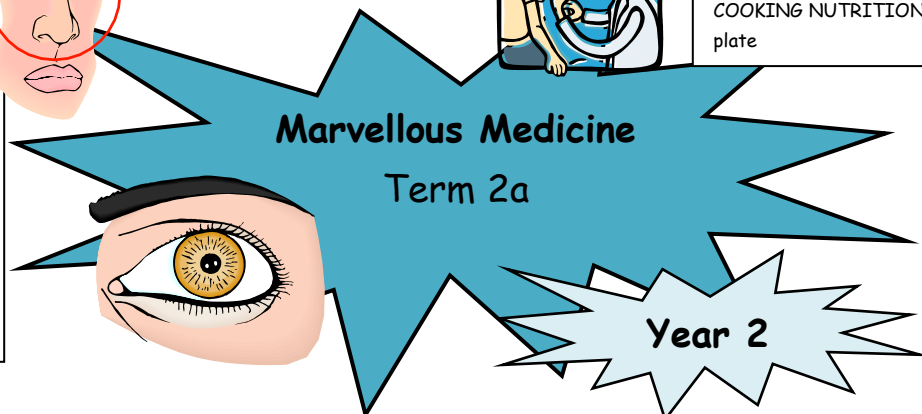
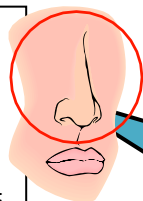
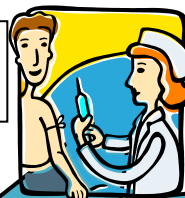
ART3D AND SCULPTURE - Build a textured tile.

DIGITAL MEDIA - Take photographs using iPad of natural forms.

PAINTING AND PRINTING - Look at the mural work of Virginia Pacer. Create a large mural of buildings.

ARTIST STUDY - Virginia Pacer

Educational visit:
Florence Nightingale



Computing

Unit 2.2 Online Safety

Unit 2.5 Effective Searching Use an online encyclopaedia / search engines to gain information about the body/senses.

Word process work done in English.

Scroll alphabet and search an encyclopaedia for information. Make a class encyclopaedia about our bodies. Label a picture of an eye/mouth online. Word-process a sentence about a body part/s. The sentence should include a key word, which they used to search for information.



History

Who was Florence Nightingale?

How do we know about people from the past? What do we know about the early life of Florence Nightingale? Can you sequence the main events of Florence Nightingale's life? What were the hospital conditions in Scutari like before and after Florence Nightingale visited? How did the lives of Florence Nightingale and Mary Seacole compare? What was Florence Nightingale's nickname?

PE

Attacking & Defending
Circuit Training

PSHE

Keeping/Staying Healthy - Healthy Eating and Brushing Teeth

Computer safety - Image Sharing

Music

Music and drama

Florence Nightingale

Learn to sing songs about Florence Nightingale

Use music to acquire new knowledge about the topic

Develop vocal skills

RE

Creation - Who made the World?